

MENTOR TRAINING

Presented by CESA #4 Peer Review & Mentoring Grant and
PI-34 Educator Quality & Licensing

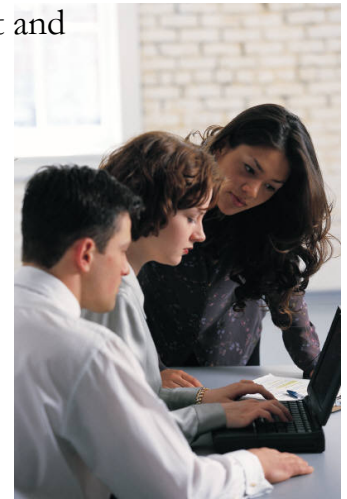
June 15th, 2012

CESA #4

923 East Garland Street, West Salem

8:30 a.m. - 9:00 a.m. Registration and Refreshments

9:00 a.m. - 3:00 p.m. Workshop



This workshop is intended for educators who hold a Professional Teachers license in Wisconsin and who seek to mentor Initial Educators. This training will fulfill the DPI requirement for being a trained mentor. Attendees will receive an overview of the mentoring process and explore the variety of ways that mentors support Initial Educators in the first years of teaching.

Workshop Components

- Overview of PI 34
- Explore roles of the mentor
- Understand the needs of beginning educators
- Review effective communication skills
- Explore mentoring as observation and coaching
- Understand collaborative relationship dynamics - confidentiality in the relationship
- Development of goals for the working relationship of mentor and Initial Educator (having a "road map" to follow)
- Support the Initial Educator through the PDP process

For questions regarding workshop content, contact Billie Finco (608) 786-4830
bfinco@cesa4.k12.wi.us. Lunch and materials will be provided for this training.

Pre-Registration is required at myQuickReg.com. For registration questions, contact
Sally Weber (608) 786-4831 sweber@cesa4.k12.wi.us

This workshop is available at no cost to Peer Review and Mentoring Grant Partners and PI-34 Educator Quality and Licensing Member Districts: Alma Center-Humbird-Merrillan, Arcadia, Bangor, Blair-Taylor, Black River Falls, Cashton, Cochrane-Fountain City, De Soto, Hillsboro, Independence, La Farge, Norwalk-Ontario-Wilton, Royall, Sparta, Tomah, Viroqua, Westby, West Salem, Whitehall, Wonewoc-Center, and Diocese of La Crosse Catholic Schools: Sacred Heart School, Cashton; St. Charles School, Genoa; SS Peter and Paul School, Independence; Aquinas Catholic Schools, La Crosse; St. Patrick School, Sparta; St. Mary School, Tomah; and St. Boniface, Waumandee Educators. The charge for non-members is \$150.

Lunch and materials will be provided for this training.